

**ART OF SERVICES
ART OF ENGINEERING**





ABOUT US

Art Shipyard is the new shipyard of Besiktas Group a long established shipping company and market leader in the ship repair industry in Europe. It is located at the heart of the industry in Tuzla bay, which is the traditional ship repair hub of Turkey. Art Shipyard is the new generation shipyard where our international customers experience the "art of service" to its fullest through the high standards of engineering, safety and sustainability. We are competitive in terms of cost, time and quality, and highly qualified in providing our clients with the assistance and support they need in every step of the way.

MISSION

To prioritize continuous development towards excellence in drydocking, repair and conversion operations carried out on the vessels of our clients in accordance with the international regulations and standards.
To adopt the customer satisfaction, transparency, reliability and safety as our top values.

VISION

To become a leading, reliable and preferred shipyard within the global ship repair and conversion market, thanks to the power of the brand focused on safety, speed and service quality.

OUR GOALS

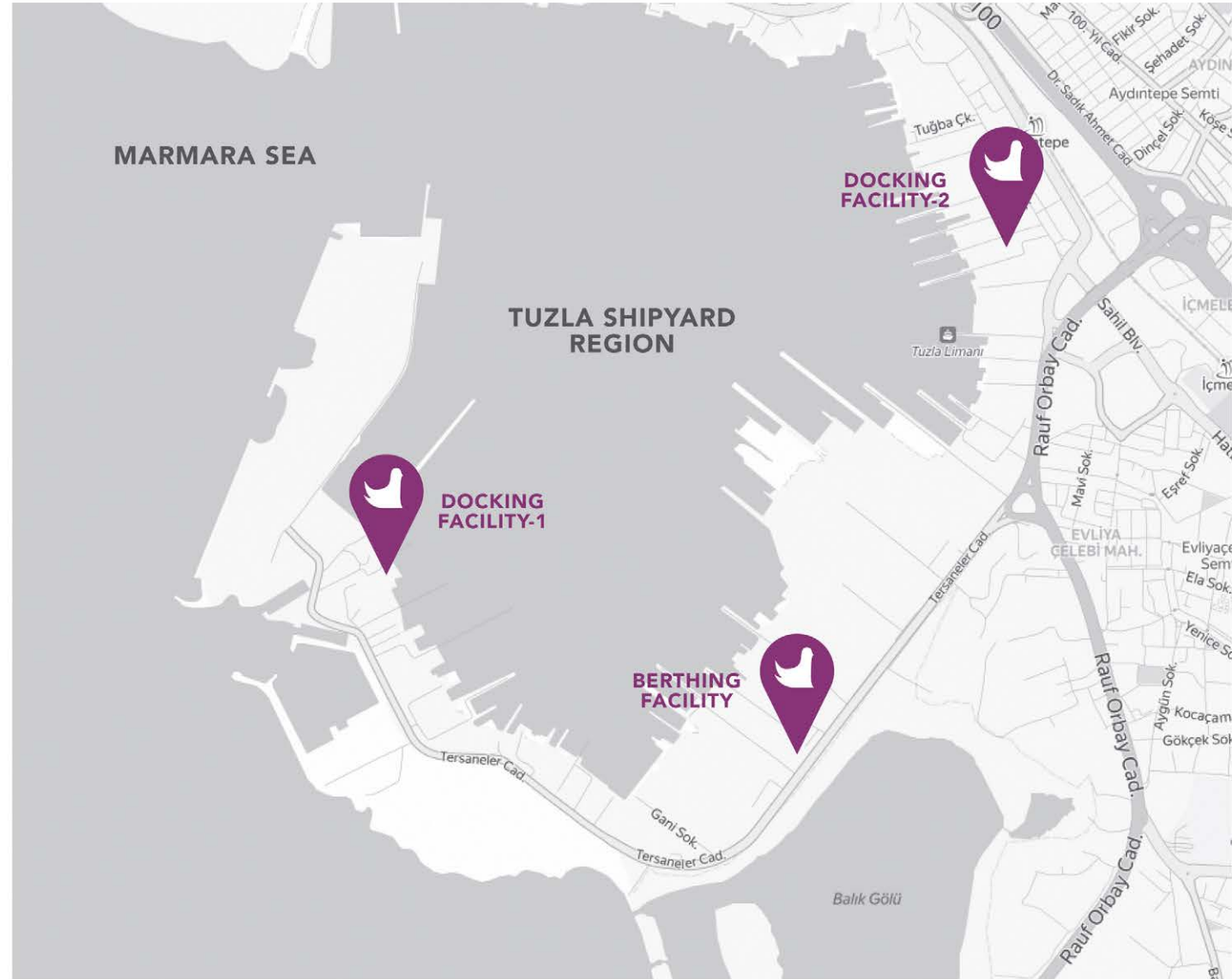
- Customer satisfaction & global reputation
- High quality service on time
- Cost effectiveness
- Augmenting production and planning efficiency
- Zero incidents with well established safety culture
- Sustainable quality management organization



LOCATION



Located in the heart of the ship repair industry of Turkey



20 nautical miles distance from Bosphorus Strait



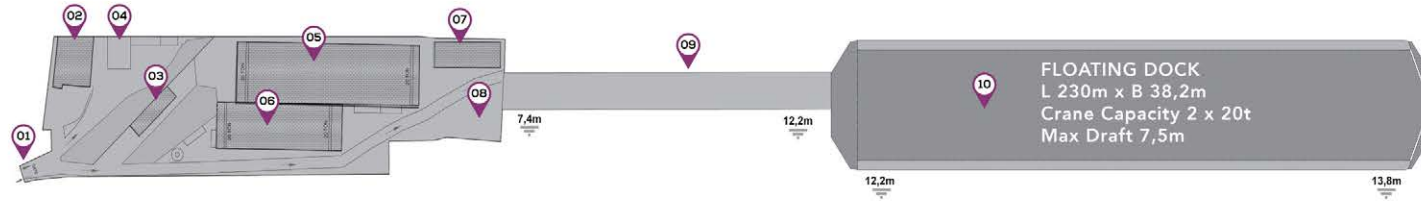
15 minutes distance from Sabiha Gokcen International Airport and 1 hour distance from Istanbul Airport



5 km from Tuzla authorised workshops

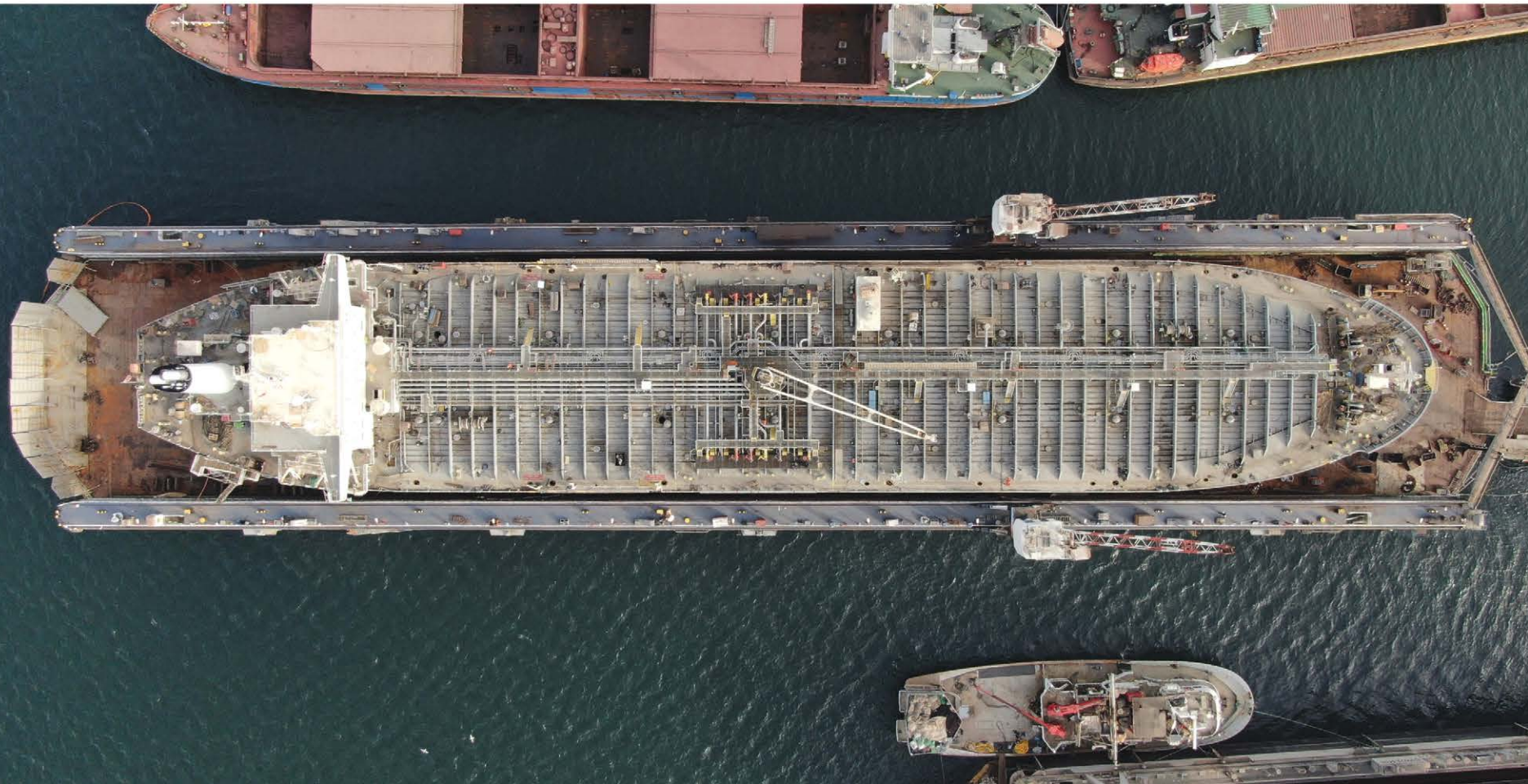
10 minutes driving to reach hotels and recreation area

DOCKING FACILITY-1



- 1 MAIN GATE
- 2 MAIN OFFICES
- 3 YARD MESS ROOM / TRAINING OFFICE
- 4 WAREHOUSE / CLOSED STORAGE
- 5 STEEL & PIPE WORKSHOP

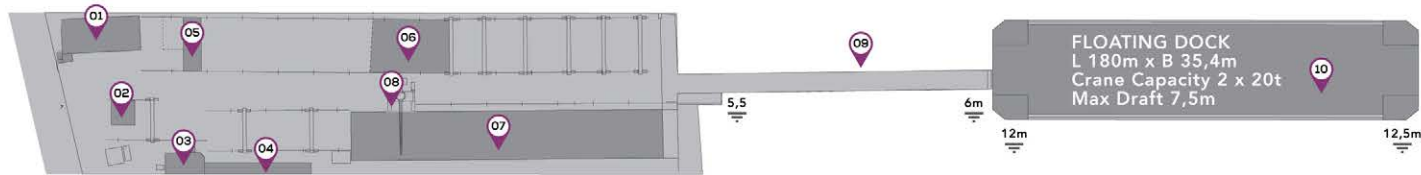
- 6 MECHANICAL WORKSHOP
- 7 COMPRESSOR ROOM / REST ROOM
- 8 OPEN STORAGE AREA
- 9 LAY BY BERTH - 120m
- 10 FLOATING DOCK



PANAMAX FLOATING DOCK

Lifting Capacity : 20.000 t
Length Overall : 230 m
Inner Free Breadth : 38.2 m
Crane Capacity : 2 x 20 t
Berthing Alongside : 2 x 230 m

DOCKING FACILITY-2



- 1 MAIN GATE
- 2 PIPE WORKSHOP
- 3 COMPRESSOR ROOM
- 4 MECHANICAL / ELECTRICAL WORKSHOP
- 5 CLOSED STORAGE AREA

- 6 HATCH COVER LANDING AREA
- 7 SLIPWAY, OFFICES, WAREHOUSE
- 8 JIB CRANE 65t
- 9 LAY BY BERTH 140m
- 10 FLOATING DOCK



HANDYMAX FLOATING DOCK

Lifting Capacity : 13.500 t
Length Overall : 180m.
Inner Free Breadth : 35,5m.
Crane Capacity : 2 x 20 t
Berthing Alongside : 1 x 180 m

BERTHING FACILITY



- 1 MAIN GATE
- 2 GANTRY CRANE 400t
- 3 PRODUCTION & PAINTING WORKSHOP
- 4 HATCH COVER LANDING AREA
- 5 PRODUCTION WORKSHOP
- 6 SLIPWAY & OFFICES & WAREHOUSE
- 7 LAY BY BERTH 1 - 150m
- 8 JIB CRANE 40t
- 9 LAY BY BERTH 2 - 175m
- 10 TOWER CRANE 10t



LAY BY BERTHS

Berth 1 : 175 x 13.7 m
 Berth 2 : 150 x 7.7 m
 Depth : 5-8 m
 Crane Capacities
 Jib Crane : 40 t
 Tower Crane : 10 t
 600+ m total berth length



STEEL & PIPE WORKS

Our experienced team is serving you for the steel & pipe renewals and repair works using their utmost dexterity.

General Steel Renewal

CNC Cutting

Prefabrication

Welding Repair

General Pipe Renewal

S.S, CuNiFe, PVC & GRP



BLASTING & PAINTING WORKS

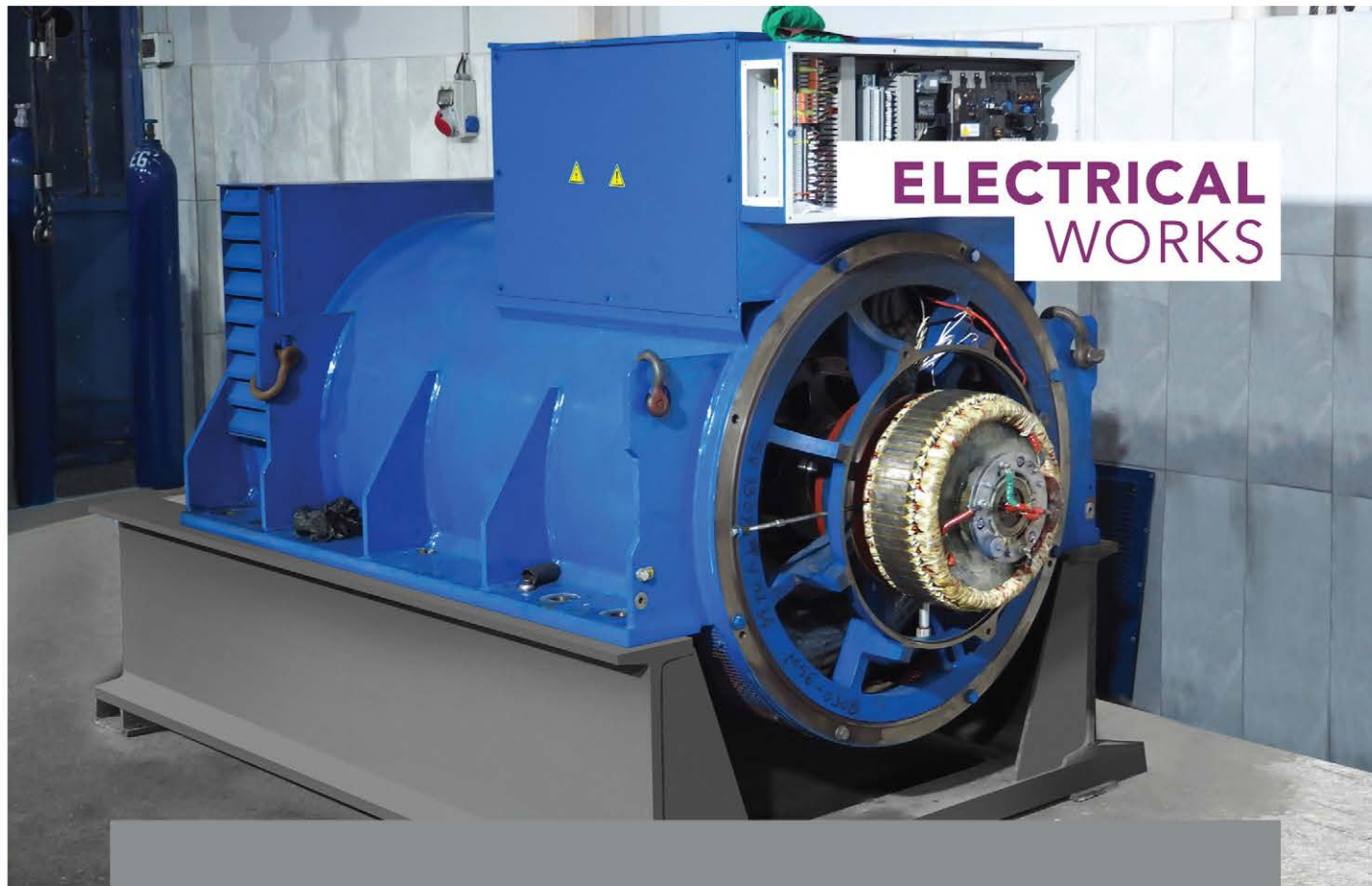
We are finally carrying out surface treatment works with our high capacity and modern equipments.

Hull & Deck

Hatch Covers

Cargo Holds

Ballast Tanks & Cargo Tanks



ELECTRICAL WORKS

We provide maintenance and renovation services for your marine electric and electronic equipments.

| | | |
|--|--------------------------------|------------------------------|
| Electric Motor Overhauling & Rewinding | Switchboard Cleaning | Air Circuit Breakers Testing |
| Calibration | Automation & Navigation System | |



MECHANICAL WORKS

Under our roof the experienced and professional technicians are dealing with any kind of needs regarding ship machinery parts.

| | | | |
|---------------------------------|---------------------|----------------------------|---------------------------|
| Shaft, Propeller & Rudder Works | ME & AE Overhauling | Turbocharger & Governor | Boiler Maintenance |
| Valve Overhauling | Pumps Overhauling | Windlass & Mooring Winches | Crane & Hydraulic Systems |



BALLAST WATER TREATMENT AND SCRUBBER SYSTEM INSTALLATION

- Professionalism in retrofitting of Ballast Water Treatment and exhaust gas scrubber systems
- Periodically organized seminars and trainings from equipment makers to shipyard engineers
- Cooperation with all major system makers
- Gre/grve pipes supply from top quality makers
- Prefabrication of steel structure and piping
- Convenient layout for safe storage of equipment
- High crainage capacity up to 400 tons at lay by berth



Evliya Çelebi Mh. Tersaneler Cd. No: 42, Tuzla - Istanbul | TURKEY
T +90 216 446 0278 F +90 216 446 1278
marketing@artshipyard.com
www.artshipyard.com

[in /artshipyard](https://www.linkedin.com/company/artshipyard) [f /artshipyard](https://www.facebook.com/artshipyard) [@ /art_shipyard](https://www.instagram.com/art_shipyard)